



US008284150B2

(12) **United States Patent**  
**Han**

(10) **Patent No.:** **US 8,284,150 B2**  
(45) **Date of Patent:** **Oct. 9, 2012**

(54) **SHIFT REGISTER AND ORGANIC LIGHT EMITTING DISPLAY DEVICE USING THE SAME**

(75) Inventor: **Sam-II Han, Yongin (KR)**

(73) Assignee: **Samsung Mobile Display Co., Ltd.**  
Gyeonggi-Do (KR)

(\* ) Notice: Subject to any disclaimer, the term of this patent is extended or adjusted under 35 U.S.C. 154(b) by 568 days.

(21) Appl. No.: **12/568,521**

(22) Filed: **Sep. 28, 2009**

(65) **Prior Publication Data**

US 2010/0177023 A1 Jul. 15, 2010

(30) **Foreign Application Priority Data**

Jan. 12, 2009 (KR) ..... 10-2009-0002232

(51) **Int. Cl.**  
**G09G 3/36** (2006.01)

(52) **U.S. Cl.** ..... **345/100; 345/204; 377/64; 377/75; 377/76**

(58) **Field of Classification Search** ..... **345/100, 345/204; 377/64, 75, 76**  
See application file for complete search history.

(56) **References Cited**

**U.S. PATENT DOCUMENTS**

2008/0062071 A1\* 3/2008 Jeong ..... 345/46  
2010/0073355 A1\* 3/2010 Chun et al. .... 345/213

**FOREIGN PATENT DOCUMENTS**

KR 10-0610611 B1 8/2006  
KR 10-2007-0002530 A 1/2007  
KR 10-0707617 B1 4/2007  
KR 10-2007-0101474 A 10/2007  
KR 10-2008-0022688 A 3/2008  
KR 10-2008-0033630 A 4/2008  
KR 10-2008-0114378 A 12/2008  
KR 10-1023722 B1 3/2011

**OTHER PUBLICATIONS**

Korean Office Action dated Feb. 25, 2011 for Korean Patent Application No. KR 10-2009-0002232 which corresponds to the captioned application.

Korean Office Action dated Feb. 25, 2011 for Korean Patent Application No. KR 10-2009-0002649 corresponding to U.S. Appl. No. 12/568,588, filed Sep. 28, 2009, which is related to the captioned application.

\* cited by examiner

*Primary Examiner* — Latanya Bibbins

(74) *Attorney, Agent, or Firm* — Knobbe Martens Olson & Bear LLP

(57) **ABSTRACT**

A shift register is disclosed. In one aspect, the shift register has a plurality of stages dependently coupled to an input line of a start pulse and is driven by first, second and third clock signals respectively input to first, second and third input lines. The shift register includes first and second voltage stabilizer circuits to prevent leakage currents.

**20 Claims, 5 Drawing Sheets**

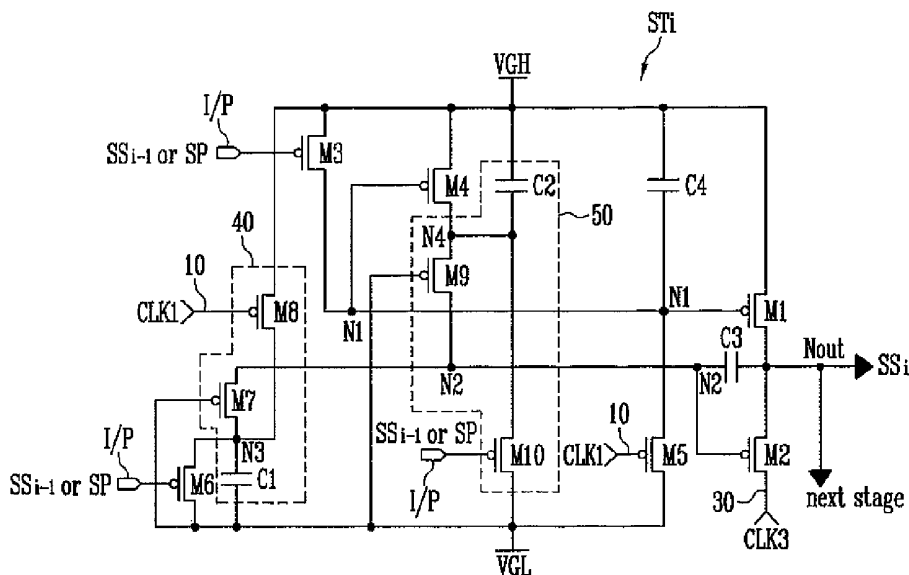


FIG. 1

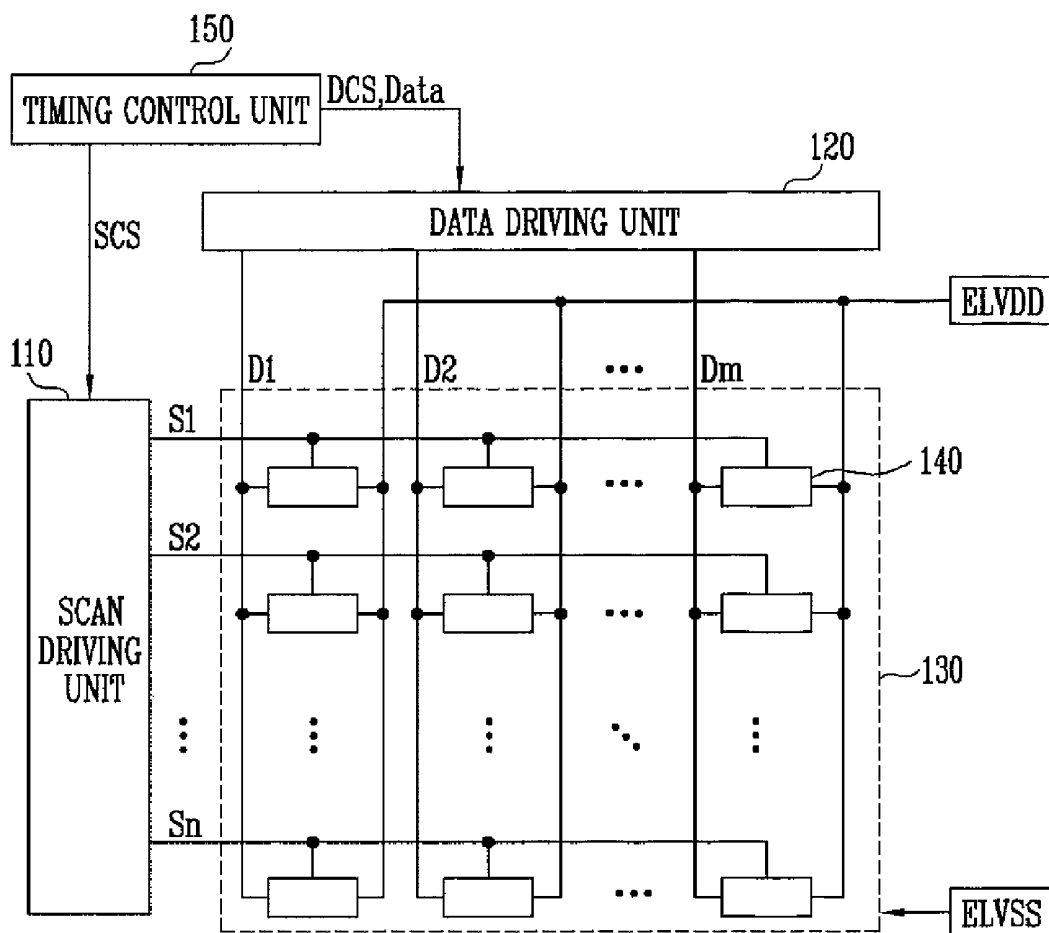


FIG. 2

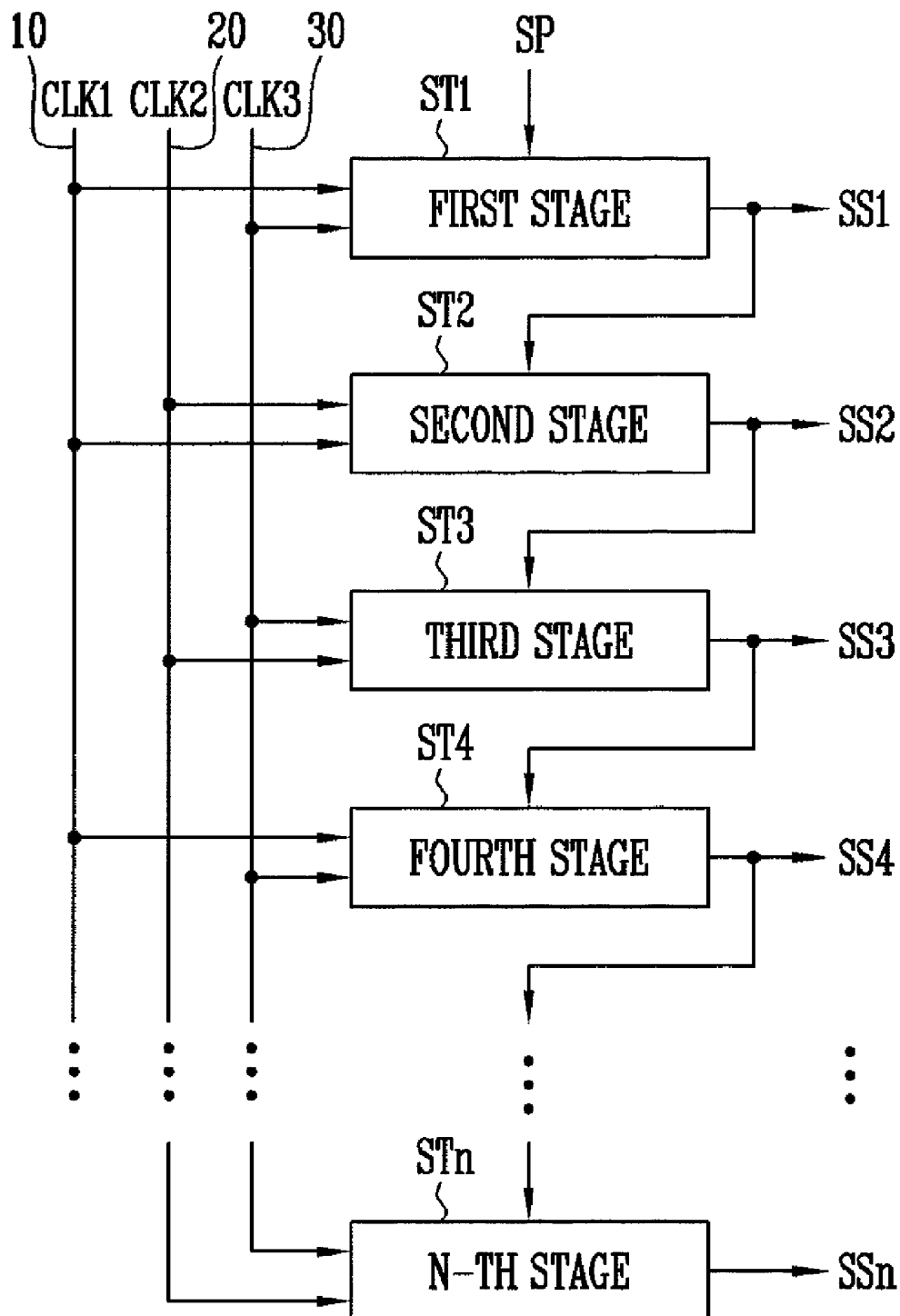




FIG. 4

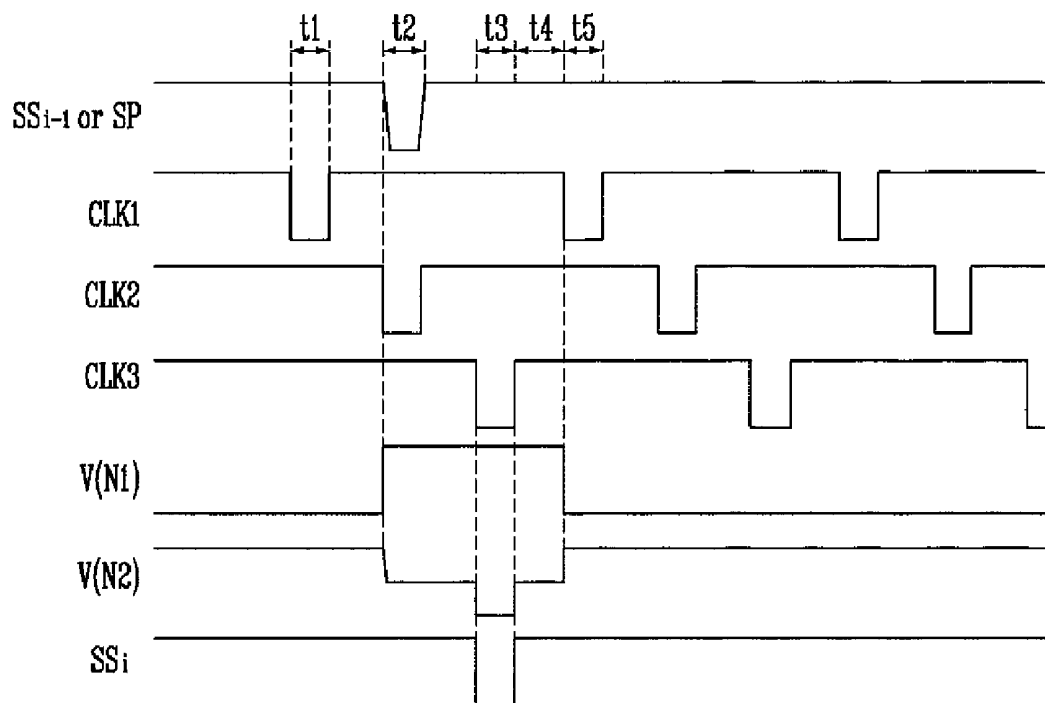
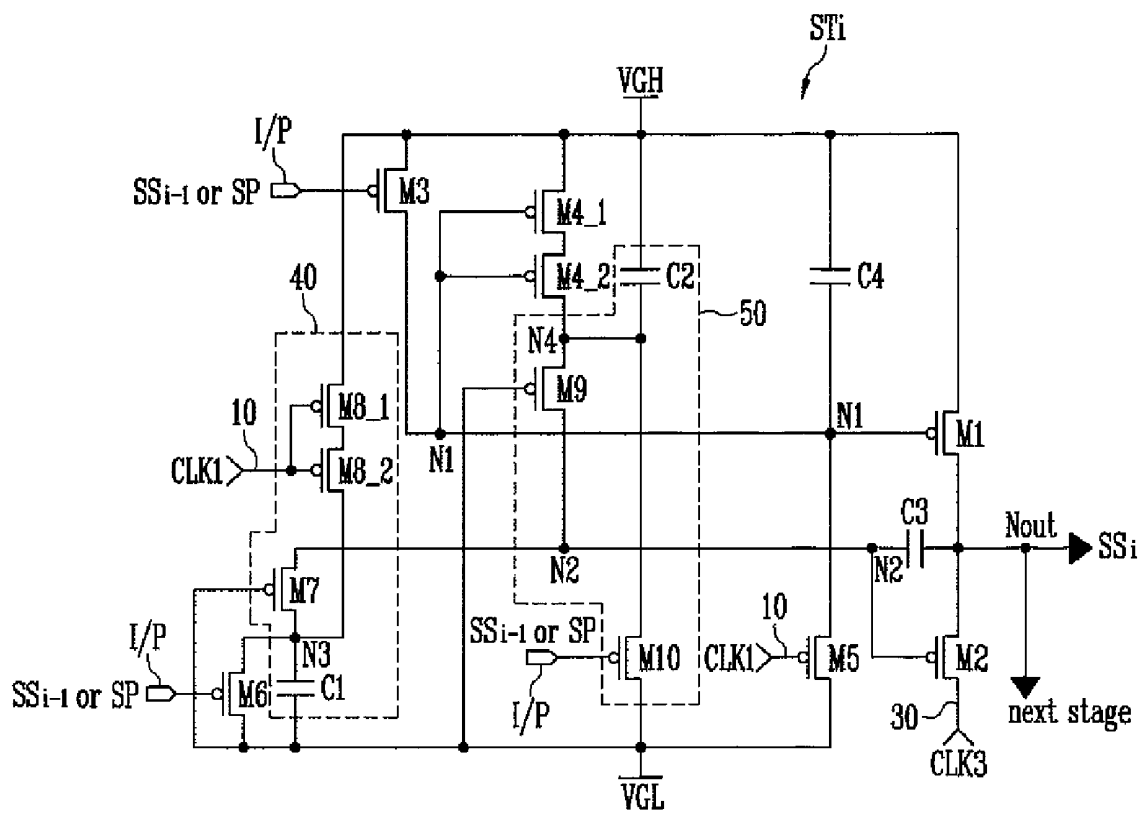


FIG. 5



**SHIFT REGISTER AND ORGANIC LIGHT  
EMITTING DISPLAY DEVICE USING THE  
SAME**

CROSS-REFERENCE TO RELATED  
APPLICATIONS

This application claims priority to and the benefit of Korean Patent Application No. 10-2009-0002232, filed on Jan. 12, 2009, in the Korean Intellectual Property Office, the entire content of which is incorporated herein by reference.

BACKGROUND

1. Field

The technology relates to a shift register and an organic light emitting display device using the same, and more particularly, to a shift register provided for a driving circuit driving pixel lines and an organic light emitting display device using the same.

2. Description of the Related Technology

An organic light emitting display device has a pixel array arranged in a matrix form near intersections of data and scan lines.

The pixel array is driven by a scan driving unit supplying scan signals to the scan lines and a data driving unit supplying data signals to the data lines.

The scan driving unit has a shift register that sequentially outputs scan signals to the scan lines so as to select pixels which receive a data signal supplied for each line in the pixel array.

The shift register includes stages each having a plurality of transistors. Output characteristics of the shift register are influenced by characteristics of the transistors provided in the shift register.

Particularly, when off-current characteristics of the transistors provided in the shift register are not satisfactory, the output characteristics of the shift register are unstable, and accordingly, performance of the scan driving unit may be degraded.

SUMMARY OF CERTAIN INVENTIVE ASPECTS

One aspect is a shift register comprising a plurality of serially connected stages, wherein one of the stages is connected to an input line of a start pulse, the shift register being driven by first, second and third clock signals, respectively input to first, second and third input lines. Each of the stages comprises a first transistor coupled between a first power source and an output node, the first transistor having a gate electrode coupled to a first node, a second transistor coupled between the output node and the third input line, the second transistor having a gate electrode coupled to a second node, a third transistor coupled between the first power source and the first node, the third transistor having a gate electrode coupled to an input terminal to which the start pulse or an output signal of a previous stage is input, a fourth transistor coupled between the first power source and the second node, the fourth transistor having a gate electrode coupled to the first node, a fifth transistor coupled between the first node and a second power source, the fifth transistor having a gate electrode coupled to the first input line, a first voltage stabilizer coupled to the first and second power sources, the first input line and the second node, wherein the first voltage stabilizer is configured to stabilize a voltage at the second node, a sixth transistor having one electrode coupled to the second node via the first voltage stabilizer, having another electrode coupled

to the second power source, and having a gate electrode coupled to the input terminal, and a second voltage stabilizer coupled between the fourth transistor and the second node, the second voltage stabilizer being further coupled to the first and second power sources and the input terminal, wherein the second voltage stabilizer is configured to stabilize the voltage at the second node.

Another aspect is an organic light emitting display device comprising a pixel unit having a plurality of pixels positioned near intersections of scan and data lines, a data driving unit configured to apply data signals to the data lines, a scan driving unit having a shift register configured to sequentially apply scan signals to the scan lines. The shift register comprises a plurality of serially connected stages, wherein one of the stages is connected to an input line of a start pulse and is driven by first, second and third clock signals respectively input to first, second and third input lines. Each of the stages comprises a first transistor coupled between a first power source and an output node, the first transistor having a gate electrode coupled to a first node, a second transistor coupled between the output node and the third input line, the second transistor having a gate electrode coupled to a second node; a third transistor coupled between the first power source and the first node, the third transistor having a gate electrode coupled to an input terminal to which the start pulse or an output signal of a previous stage is input, a fourth transistor coupled between the first power source and the second node, the fourth transistor having a gate electrode coupled to the first node; a fifth transistor coupled between the first node and a second power source, the fifth transistor having a gate electrode coupled to the first input line; a first voltage stabilizer coupled to the first and second power sources, the first input line and the second node, wherein the first voltage stabilizer is configured to stabilize a voltage at the second node; a sixth transistor having one electrode coupled to the second node via the first voltage stabilizer, having another electrode coupled to the second power source, and having a gate electrode coupled to the input terminal; and a second voltage stabilizer coupled between the fourth transistor and the second node, the second voltage stabilizer being further coupled to the first and second power sources and the input terminal, wherein the second voltage stabilizer is configured to stabilize the voltage at the second node.

Yet another aspect is a shift register comprising a plurality of serially connected stages, wherein one of the stages is connected to an input line of a start pulse, the shift register being driven by first, second and third clock signals, respectively input to first, second and third input lines. Each of the stages comprises a first transistor coupled between a first power source and an output node, the first transistor having a gate electrode coupled to a first node, a second transistor coupled between the output node and the third input line, the second transistor having a gate electrode coupled to a second node, a third transistor coupled between the first power source and the first node, the third transistor having a gate electrode coupled to an input terminal to which the start pulse or an output signal of a previous stage is input, a fourth transistor coupled between the first power source and the second node, the fourth transistor having a gate electrode coupled to the first node, a fifth transistor coupled between the first node and a second power source, the fifth transistor having a gate electrode coupled to the first input line, first means for stabilizing a voltage at the second node, a sixth transistor having one electrode coupled to the second node via the first voltage stabilizer, having another electrode coupled to the second

power source, and having a gate electrode coupled to the input terminal, and a second means for stabilizing the voltage at the second node.

### BRIEF DESCRIPTION OF THE DRAWINGS

The accompanying drawings, together with the specification, illustrate exemplary embodiments, and, together with the description, serve to explain principles of the present invention.

FIG. 1 is a block diagram of an organic light emitting display device according to an embodiment.

FIG. 2 is a block diagram showing an example of a shift register included in a scan driving unit of FIG. 1.

FIG. 3 is a circuit diagram showing an example of a stage of the shift register shown in FIG. 2.

FIG. 4 is a waveform diagram showing input/output signals of the stage shown in FIG. 3.

FIG. 5 is a circuit diagram showing another example of a stage of the shift register shown in FIG. 2.

### DETAILED DESCRIPTION OF CERTAIN INVENTIVE EMBODIMENTS

Hereinafter, certain exemplary embodiments will be described with reference to the accompanying drawings. Here, when a first element is described as being coupled to a second element, the first element may be directly coupled to the second element or may be indirectly coupled to the second element via a third element. Also, like reference numerals generally refer to like elements throughout.

FIG. 1 is a block diagram of an organic light emitting display device according to an embodiment.

Referring to FIG. 1, the organic light emitting display device includes a pixel unit **130** having pixels **140** formed in portions partitioned according to scan lines **S1** to **Sn** and data lines **D1** to **Dm**; a scan driving unit **110** driving the scan lines **S1** to **Sn**; a data driving unit **120** driving the data lines **D1** to **Dm**; and a timing control unit **150** controlling the scan driving unit **110** and the data driving unit **120**.

The scan driving unit **110** receives a scan driving control signal **SCS** supplied from the timing control unit **150** to generate scan signals and supplies the generated scan signals to the scan lines **S1** to **Sn**. The scan driving control signal **SCS** contains a start pulse **SP**, clock signals **CLK**, and the like.

To this end, the scan driving unit **110** includes a shift register that sequentially generates scan signals in response to the start pulse **SP** and the clock signals **CLK** and applies the scan signals to the scan lines **S1** to **Sn**.

The data driving unit **120** receives a data driving control signal **DCS** and a data **Data** supplied from the timing control unit **150** to generate data signals. The data signals generated from the data driving unit **120** are supplied to the data lines **D1** to **Dm** in synchronization with the scan signals.

The timing control unit **150** generates a scan driving control signal **SCS** and a data driving control signal **DCS** in response to synchronization signals. The scan driving control signal **SCS** generated from the timing control unit **150** is supplied to the scan driving unit **110**, and the data driving control signal **DSC** generated from the timing control unit **150** is supplied to the data driving unit **120**. The timing control unit **150** supplies a data **Data** supplied from the outside to the data driving unit **120**.

The pixel unit **130** includes a plurality of pixels **140** positioned near intersections of the scan lines **S1** to **Sn** and the data lines **D1** to **Dm**. Each of the pixels **140** receives first and second pixel power sources **ELVDD** and **ELVSS**, and

receives scan and data signals respectively supplied from the scan and data driving units **110** and **120**. Each of the pixels **140**, which receives the first and second pixel power sources **ELVDD** and **ELVSS** and the scan and data signals, is selected by a scan signal to receive a data signal and generates light corresponding to the data signal.

FIG. 2 is a block diagram showing an example of a shift register included in the scan driving unit of FIG. 1.

Referring to FIG. 2, the shift register includes a plurality of stages **ST1** to **STn** dependently coupled to an input line of a start pulse **SP**. The shift register is driven by first, second and third clock signals **CLK1**, **CLK2** and **CLK3** respectively input from the first, second and third input lines **10**, **20** and **30**.

The three clock signals **CLK1**, **CLK2** and **CLK3** are configured so that their phases are sequentially delayed, and each of the stages **ST** is coupled to lines of two clock signals out of the three clock signals **CLK1**, **CLK2** and **CLK3**. A clock signal obtained by allowing a clock signal **CLK** input to a previous stage to be phase-delayed is supplied to each of the next stages.

For example, when the first stage **ST1** is driven with first and third clock signals **CLK1** and **CLK3** respectively input from the first and third input lines **10** and **30**, the second stage **ST2** receives second and first clock signals **CLK2** and **CLK1** respectively, where the second and first clock signals **CLK2** and **CLK1** are phase-delayed versions of the first and third clock signals **CLK1** and **CLK3**, respectively. Such a phase configuration is shown among **CLK1**, **CLK2**, and **CLK3** of FIG. 4.

If the start pulse **SP** and the first, second, and third clock signals **CLK1**, **CLK2** and **CLK3** are input to the shift register, the first stage **ST1** outputs a first scan signal **SS1** obtained by allowing the start pulse supplied to the first stage **ST1** to be phase-delayed by one clock in response to the first and third clock signals **CLK1** and **CLK3**. The first scan signal **SS1** is output through the first scan line (**S1** of FIG. 1) and is also supplied to the second stage **ST2**.

Then, the second stage **ST2** outputs a second scan signal **SS2** obtained by allowing the first scan signal **SS1** supplied to the second stage **ST2** to be phase-delayed by one clock in response to the second and first clock signals **CLK2** and **CLK1**. The second scan signal **SS2** is output through the second scan line **S2** and also supplied to the third stage **ST3**.

Each of the following stages **ST** likewise allow the start pulse or output signal (scan signal) of its previous stage to be phase-delayed by one clock, thereby sequentially outputting scan signals **SS** to the scan lines **S**.

FIG. 3 is a circuit diagram showing an example of a stage of the shift register shown in FIG. 2.

Referring to FIG. 3, the stage **ST1** includes first to sixth transistors **M1** to **M6**, first and second voltage stabilizers **40** and **50**, and third and fourth capacitors **C3** and **C4**.

The first transistor **M1** is coupled between an output node **Nout** and a first power source **VGH** that is a gate high-level voltage source. A gate electrode of the first transistor **M1** is coupled to a first node **N1**.

When the voltage level at the first node **N1** is a low level, the first transistor **M1** is turned on to allow the first power source **VGH** to be electrically coupled to the output node **Nout**. That is, when the first transistor **M1** is turned on, a high-level output signal **SSi** is output to the output node **Nout**.

The second transistor **M2** is coupled between the output node **Nout** and the input line **30** of the third clock signal **CLK3**. A gate electrode of the second transistor **M2** is coupled to a second node **N2**.

When the voltage level at the second node **N2** is a low level, the second transistor **M2** is turned on to allow the output node

Nout to be electrically coupled to the input line 30 of the third clock signal CLK3. That is, when the second transistor M2 is turned on, the waveform of the output signal SSi corresponds to that of the third clock signal CLK3.

The third transistor M3 is coupled between the first power source VGH and the first node N1. A gate electrode of the third transistor M3 is coupled to an input terminal I/P to which a start pulse SP or an output signal SSi-1 of a previous stage is input.

The third transistor M3 controls the voltage level at the first node N1 in response to the start pulse SP or the output signal SSi-1 of the previous stage.

The fourth transistor M4 is coupled between the first power source VGH and the second node N2. A gate electrode of the fourth transistor M4 is coupled to the first node N1.

The fourth transistor M4 controls the voltage level at the second node N2 corresponding to the voltage level at the first node N1. Here, the fourth transistor M4 is coupled to the second node N2 via a ninth transistor M9 of the second voltage stabilizer 50. However, while the fourth transistor M4 is turned on, the ninth transistor M9 also maintains a turned-on state. Accordingly, the voltage level at the second node N2 is controlled to be a high level by the fourth transistor M4.

The fifth transistor M5 is coupled between the first node N1 and a second power source VGL that is a gate low-level voltage source. A gate electrode of the fifth transistor M5 is coupled to the first input line 10.

The fifth transistor M5 controls the voltage level at the first node N1 in response to the first clock signal CLK1 supplied to the first input line 10.

The sixth transistor M6 is coupled between the second node N2 and the second power source VGL, and one electrode of the sixth transistor M6 is coupled to the second node N2 via a seventh transistor M7 of the first voltage stabilizer 40. A gate electrode of the sixth transistor M6 is coupled to an input terminal I/P.

The sixth transistor M6 controls the voltage level at the second node N2 in response to a start pulse SP or output signal SSi-1 of a previous stage supplied to the input terminal I/P.

While the sixth transistor M6 is turned on, the seventh transistor M7 also maintains a turned-on state. Therefore, the voltage level at the second node N2 is dropped by the sixth transistor M6.

The first voltage stabilizer 40 is coupled to the first and second power sources VGH and VGL, the first input line 10 and the second node N2 so as to stabilize the voltage at the second node N2.

To this end, the first voltage stabilizer 40 includes a seventh transistor M7 coupled between the second node N2 and the sixth transistor M6 and having a gate electrode coupled to the second power source VGL; a first capacitor C1 coupled between the second power source VGL and a third node N3 that is a connection node of the sixth and seventh transistors M6 and M7; and an eighth transistor M8 coupled between the first power source VGH and the third node N3 and having a gate electrode coupled to the first input line 10.

When a low-level scan signal SSi is output to the output node Nout, the first voltage stabilizer 40 prevents leakage current from flowing between the second node N2 and the second power source VGL. Accordingly, the first voltage stabilizer 40 stabilizes the voltage at the second node N2.

The second voltage stabilizer 50 is coupled between the fourth transistor M4 and the second node N2. The second voltage stabilizer 50 is further coupled to the first and second power sources VGH and VGL and an input terminal I/P so as to stabilize the voltage at the second node N2.

The second voltage stabilizer 50 includes a ninth transistor M9 coupled between the fourth transistor M4 and the second node N2 and having a gate electrode coupled to the second power source VGL, a second capacitor C2 coupled between the first power source VGH and a fourth node N4 that is a connection node of the fourth and ninth transistors M4 and M9; and a tenth transistor M10 coupled between the fourth node N4 and the second power source VGL and having a gate electrode coupled to the input terminal I/P.

When a low-level scan signal SSi is output to the output node Nout, the second voltage stabilizer 50 prevents leakage current from flowing between the first power source VGH and the second node N2. Accordingly, the second voltage stabilizer 50 stabilizes the voltage at the second node N2.

The third capacitor C3 is coupled between the second node N2 and the output node Nout. When the voltage level of the third clock signal CLK3 is changed in the state that the second transistor M2 is turned on, the third capacitor C3 allows the voltage level at the second node N2 to be raised or dropped together with the output node Nout due to the coupling of capacitor C3.

The fourth capacitor C4 is coupled between the first power source VGH and the first node N1. That is, the fourth capacitor C4 is coupled between the gate and source electrodes of the first transistor M1 so as to stabilize the operation of the first transistor M1.

As described above, the first and second voltage stabilizers 40 and 50 are designed in each of the stages STi, so that it is possible to prevent leakage current from flowing between the first or second power source VGH or VGL and the second node N2 when a scan signal SSi is output to the output node Nout. Accordingly, while a low-level scan signal SSi is output to the output node Nout, the voltage level at the second node N2 is stabilized as a low level at which the second transistor M2 is sufficiently turned on, thereby stabilizing output characteristics of the shift register.

Hereinafter, the operation of the stage shown in FIG. 3 will be described in conjunction with waveforms of input/output signals shown in FIG. 4.

Referring to FIG. 4, a low-level first clock signal CLK1 is first supplied to the first input line 10 during a first period t1. Accordingly, the fifth and eighth transistors M5 and M8 are turned on.

Because the fifth transistor M5 is turned on, the second power source VGL is electrically coupled to the first node N1, and the voltage V(N1) at the first node N1 becomes a low level. Accordingly, while the first transistor M1 maintains a turned-on state during the first period t1, the output signal SSi output through the output node Nout is maintained as a high level.

Because the eighth transistor M8 is turned on, the first power source VGH is electrically coupled to the third node N3, and the voltage at the third node N3 becomes a high level. The seventh transistor M7 is turned on by the voltage between the gate and source electrodes thereof, and therefore, the second node N2 is electrically coupled to the third node N3. Accordingly, during the first period t1, the voltage V(N2) at the second node N2 is maintained as a high level, and a turned-off state is maintained in the second transistor M2. As a result, a high-level voltage is charged into the first capacitor C1.

Thereafter, a low-level start pulse SP or output signal SSi-1 of a previous stage is supplied to the input terminal I/P during a second period t2. Accordingly, the third, sixth and tenth transistors M3, M6 and M10 are turned on.

Because the third transistor M3 is turned on, the first power source VGH is electrically coupled to the first node N1, and

the voltage  $V(N1)$  at the first node  $N1$  becomes a high level. Accordingly, the first and fourth transistors  $M1$  and  $M4$  are turned off.

Because the sixth transistor  $M6$  is turned on, the second power source  $VGL$  is electrically coupled to the third node  $N3$ , and the voltage at the third node  $N3$  becomes a low level.

As a result, a low-level voltage obtained by subtracting the threshold voltage of the sixth transistor  $M6$  from the voltage at the third node  $N3$ . That is, the voltage at the third node  $N3$  becomes a low level higher by the threshold voltage of the sixth transistor  $M6$  than that of the second power source  $VGL$ . For example, if the voltage of the second power source  $VGL$  is  $-7V$  and the threshold voltage of the sixth transistor  $M6$  is  $-3V$ , the voltage at the third node  $N3$  becomes  $-4V$ .

The seventh transistor  $M7$  maintains a turned-on state during the second period  $t2$ , so that the voltage  $V(N2)$  at the second node  $N2$  is dropped from a high level to a low level.

Accordingly, the second transistor  $M2$  is turned on, and therefore, the third input line  $30$  is electrically coupled to the output node  $Nout$ . The third clock signal  $CLK3$  is set as a high level during the second period  $t2$ , and therefore, the output signal  $SSi$  is maintained as a high level. As a result, a voltage at which the second transistor  $M2$  can be turned on is stored in the third capacitor  $C3$ .

Because the tenth transistor  $M10$  is turned on, the second power source  $VGL$  is electrically coupled to the fourth node  $N4$ , and the voltage at the fourth node  $N4$  is a low level. As a result, a voltage corresponding to the low-level voltage at the fourth node  $N4$  is charged in the second capacitor  $C2$ .

Thereafter, when the voltage level of the third clock signal  $CLK3$  supplied to the third input line  $30$  transitions to a low level during a third period  $t3$ , the voltage  $V(N2)$  at the second node  $N2$  is dropped to a low level lower than the voltage level of the third clock signal  $CLK3$  due to the coupling of a parasitic capacitor (not shown) of the second transistor  $M2$  and the coupling of third capacitor  $C3$ . Accordingly, while a turned-on state is stably maintained in the second transistor  $M2$ , the low-level voltage of the third clock signal  $CLK3$  is output to the output node  $Nout$ . That is, a low-level scan signal  $SSi$  is output during the third period  $t3$ .

The voltage  $V(N2)$  at the second node  $N2$  is dropped to a low level lower than the voltage level of the third clock signal  $CLK3$  during the third period  $t3$ . As a result, each of the seventh and ninth transistors  $M7$  and  $M9$  is turned off by the voltage between the gate and source electrodes thereof.

The seventh and ninth transistors  $M7$  and  $M9$  are not directly coupled to the second and first power sources  $VGL$  and  $VGH$  but coupled to the second and first power sources  $VGL$  and  $VGH$  by the first and second capacitors  $C1$  and  $C2$ , respectively. The voltages respectively charged in the first and second capacitors  $C1$  and  $C2$  are, therefore, maintained during the second period  $t2$ .

When the ninth transistor  $M9$  is coupled to the first power source  $VGH$  by the second capacitor  $C2$ , the voltage between the drain and source electrodes of the ninth transistor  $M9$  is substantially lower than that if the ninth transistor  $M9$  were directly coupled to the first power source  $VGH$ . For the seventh transistor  $M7$ , the voltage at the third node  $N3$  is maintained as a low voltage between the drain and source electrodes. As a result, off-current can be prevented while turned-on and turned-off states are maintained in the seventh transistor  $M7$  during the second and third periods  $t2$  and  $t3$ , respectively.

Therefore, leakage current between the second node  $N2$  and the first or second power source  $VGH$  or  $VGL$  is prevented so that there is no influence of off-current characteristics of the transistors included in the shift register output.

Particularly, off-current characteristics of the seventh and ninth transistors  $M7$  and  $M9$  do not influence the Output.

Accordingly, the voltage  $V(N2)$  of the second node  $N2$  is stably maintained low during the corresponding scan period (i.e., the third period  $t3$ ), thereby stabilizing output characteristics of the shift register.

Thereafter, if the voltage level of the third clock signal  $CLK3$  supplied to the third input line  $30$  is transitioned to a high level during a fourth period  $t4$ , the voltage  $V(N2)$  at the second node  $N2$  rises to a voltage level identical to that during the second period  $t2$ . Although the second transistor  $M2$  maintains a turned-on state during the fourth period  $t4$ , the voltage level of the third clock signal  $CLK3$  is transitioned to a high level, and therefore, the voltage of the scan signal  $SSi$  is again referred to a high level.

Thereafter, a low-level first clock signal  $CLK1$  is again supplied to the first input line  $10$  during a fifth period  $t5$ . Accordingly, while the fifth and eighth transistors  $M5$  and  $M8$  are turned on, the voltage  $V(N1)$  at the first node  $N1$  again becomes a low level, and the voltage  $V(N2)$  at the second node  $N2$  again becomes a high level.

A low-level start pulse  $SP$  or output signal of the previous stage is not supplied to the stage  $STi$  until a corresponding period of a next frame. Therefore, the voltages  $V(N1)$  and  $V(N2)$  at the first and second nodes  $N1$  and  $N2$  are maintained.

Through the driving described above, each of the stages of the shift register according to the embodiment outputs a scan signal obtained by allowing a start pulse or output signal  $SSi-1$  of a previous stage input to each of the stages  $ST$  to be phase-delayed by one clock in response to the first to third clock signals  $CLK1$  to  $CLK3$ .

Particularly, according to the embodiment shown, the voltage between the drain and source electrodes of each of the transistors, i.e., the seventh and ninth transistors  $M7$  and  $M9$  coupled to the second node  $N2$  is maintained low so that off-current can be prevented while a scan signal  $SSi$  is output, thereby preventing leakage current. Accordingly, the output of the shift register can be stabilized.

Meanwhile, to improve leakage current characteristics, at least one transistor on a path through which a minute leakage current is generated may be implemented as a plurality of transistors.

For example, as shown in FIG. 5, each of the fourth and eighth transistors  $M4$  and  $M8$  may be implemented as a plurality of transistors.

That is, the fourth transistor  $M4$  may be implemented as a plurality of transistors  $M4\_1$  and  $M4\_2$  that have gate electrodes commonly coupled to the first node  $N1$  and are coupled in series to each other. The eighth transistor  $M8$  may be implemented as a plurality of transistors  $M8\_1$  and  $M8\_2$  that have gate electrodes commonly coupled to the first input line  $10$  and are coupled in series to each other.

It will be apparent that such a modification may be applied to the other transistors.

While the present invention has been described in connection with certain exemplary embodiments, it is to be understood that the invention is not limited to the disclosed embodiments, but, on the contrary, is intended to cover various modifications and equivalent arrangements.

What is claimed is:

1. A shift register comprising a plurality of serially connected stages, wherein one of the stages is connected to an input line of a start pulse, the shift register being driven by first, second and third clock signals, respectively input to first, second and third input lines, wherein each of the stages comprises:

- a first transistor coupled between a first power source and an output node, the first transistor having a gate electrode coupled to a first node;
- a second transistor coupled between the output node and the third input line, the second transistor having a gate electrode coupled to a second node;
- a third transistor coupled between the first power source and the first node, the third transistor having a gate electrode coupled to an input terminal to which the start pulse or an output signal of a previous stage is input;
- a fourth transistor coupled between the first power source and the second node, the fourth transistor having a gate electrode coupled to the first node;
- a fifth transistor coupled between the first node and a second power source, the fifth transistor having a gate electrode coupled to the first input line;
- a first voltage stabilizer coupled to the first and second power sources, the first input line and the second node, wherein the first voltage stabilizer is configured to stabilize a voltage at the second node;
- a sixth transistor having one electrode coupled to the second node via the first voltage stabilizer, having another electrode coupled to the second power source, and having a gate electrode coupled to the input terminal; and
- a second voltage stabilizer coupled between the fourth transistor and the second node, the second voltage stabilizer being further coupled to the first and second power sources and the input terminal, wherein the second voltage stabilizer is configured to stabilize the voltage at the second node.
2. The shift register of claim 1, wherein the first voltage stabilizer comprises:
- a seventh transistor coupled between the second node and the sixth transistor, the seventh transistor having a gate electrode coupled to the second power source;
- a first capacitor coupled between the second power source and a third node, wherein the sixth and seventh transistors are also connected to the third node; and
- an eighth transistor coupled between the first power source and the third node, the eighth transistor having a gate electrode coupled to the first input line.
3. The shift register of claim 2, wherein the eighth transistor comprises a plurality of transistors that each have gate electrodes coupled to the first input line and are coupled in series to the others of the plurality of transistors.
4. The shift register of claim 1, wherein the second voltage stabilizer comprises:
- a ninth transistor coupled between the fourth transistor and the second node, the ninth transistor having a gate electrode coupled to the second power source;
- a second capacitor coupled between the first power source and a fourth node, wherein the fourth and ninth transistors are also connected to the fourth node; and
- a tenth transistor coupled between the fourth node and the second power source, the tenth transistor having a gate electrode coupled to the input terminal.
5. The shift register of claim 1, further comprising a third capacitor coupled between the second node and the output node.
6. The shift register of claim 1, further comprising a fourth capacitor coupled between the first power source and the first node.
7. The shift register of claim 1, wherein the fourth transistor comprises a plurality of transistors that each have gate electrodes coupled to the first node and are coupled in series to one another.

8. The shift register of claim 1, wherein the first, second and third clock signals have waveforms whose phases are sequentially delayed.
9. An organic light emitting display device comprising:
- a pixel unit having a plurality of pixels positioned near intersections of scan and data lines;
- a data driving unit configured to apply data signals to the data lines,
- a scan driving unit having a shift register configured to sequentially apply scan signals to the scan lines, wherein:
- the shift register comprises a plurality of serially connected stages, wherein one of the stages is connected to an input line of a start pulse and is driven by first, second and third clock signals respectively input to first, second and third input lines, and each of the stages comprises:
- a first transistor coupled between a first power source and an output node, the first transistor having a gate electrode coupled to a first node;
- a second transistor coupled between the output node and the third input line, the second transistor having a gate electrode coupled to a second node;
- a third transistor coupled between the first power source and the first node, the third transistor having a gate electrode coupled to an input terminal to which the start pulse or an output signal of a previous stage is input;
- a fourth transistor coupled between the first power source and the second node, the fourth transistor having a gate electrode coupled to the first node;
- a fifth transistor coupled between the first node and a second power source, the fifth transistor having a gate electrode coupled to the first input line;
- a first voltage stabilizer coupled to the first and second power sources, the first input line and the second node, wherein the first voltage stabilizer is configured to stabilize a voltage at the second node;
- a sixth transistor having one electrode coupled to the second node via the first voltage stabilizer, having another electrode coupled to the second power source, and having a gate electrode coupled to the input terminal; and
- a second voltage stabilizer coupled between the fourth transistor and the second node, the second voltage stabilizer being further coupled to the first and second power sources and the input terminal, wherein the second voltage stabilizer is configured to stabilize the voltage at the second node.
10. The organic light emitting display device of claim 9, wherein the first voltage stabilizer comprises:
- a seventh transistor coupled between the second node and the sixth transistor, the seventh transistor having a gate electrode coupled to the second power source;
- a first capacitor coupled between the second power source and a third node, wherein the sixth and seventh transistors are also connected to the third node; and
- an eighth transistor coupled between the first power source and the third node, the eighth transistor having a gate electrode coupled to the first input line.
11. The organic light emitting display device of claim 9, wherein the eighth transistor comprises a plurality of transistors that each have gate electrodes coupled to the first input line and are coupled in series to one another.
12. The organic light emitting display device of claim 9, wherein the second voltage stabilizer comprises:

11

a ninth transistor coupled between the fourth transistor and the second node, the ninth transistor having a gate electrode coupled to the second power source;  
 a second capacitor coupled between the first power source and a fourth node, wherein the fourth and ninth transistors are also connected to the fourth node; and  
 a tenth transistor coupled between the fourth node and the second power source, the tenth transistor having a gate electrode coupled to the input terminal.

13. The organic light emitting display device of claim 9, wherein the stage further comprises a third capacitor coupled between the second node and the output node, and a fourth capacitor coupled between the first power source and the first node.

14. The organic light emitting display device of claim 9, wherein the fourth transistor comprises a plurality of transistors that each have gate electrodes coupled to the first node and are coupled in series to one another.

15. The organic light emitting display device of claim 9, wherein the first, second and third clock signals have waveforms whose phases are sequentially delayed.

16. A shift register comprising a plurality of serially connected stages, wherein one of the stages is connected to an input line of a start pulse, the shift register being driven by first, second and third clock signals, respectively input to first, second and third input lines, wherein each of the stages comprises:

- a first transistor coupled between a first power source and an output node, the first transistor having a gate electrode coupled to a first node;
- a second transistor coupled between the output node and the third input line, the second transistor having a gate electrode coupled to a second node;
- a third transistor coupled between the first power source and the first node, the third transistor having a gate electrode coupled to an input terminal to which the start pulse or an output signal of a previous stage is input;
- a fourth transistor coupled between the first power source and the second node, the fourth transistor having a gate electrode coupled to the first node;

12

a fifth transistor coupled between the first node and a second power source, the fifth transistor having a gate electrode coupled to the first input line;  
 first means for stabilizing a voltage at the second node;  
 a sixth transistor having one electrode coupled to the second node via the first voltage stabilizer, having another electrode coupled to the second power source, and having a gate electrode coupled to the input terminal; and  
 second means for stabilizing the voltage at the second node.

17. The shift register of claim 16, wherein the first stabilizing means comprises:

- a seventh transistor coupled between the second node and the sixth transistor, the seventh transistor having a gate electrode coupled to the second power source;
- a first capacitor coupled between the second power source and a third node, wherein the sixth and seventh transistors are also connected to the third node; and  
 an eighth transistor coupled between the first power source and the third node, the eighth transistor having a gate electrode coupled to the first input line.

18. The shift register of claim 17, wherein the eighth transistor comprises a plurality of transistors that each have gate electrodes coupled to the first input line and are coupled in series to one another.

19. The shift register of claim 16, wherein the second stabilizing means comprises:

- a ninth transistor coupled between the fourth transistor and the second node, the ninth transistor having a gate electrode coupled to the second power source;
- a second capacitor coupled between the first power source and a fourth node, wherein the fourth and ninth transistors are also connected to the fourth node; and  
 a tenth transistor coupled between the fourth node and the second power source, the tenth transistor having a gate electrode coupled to the input terminal.

20. The shift register of claim 16, further comprising a third capacitor coupled between the second node and the output node, and a fourth capacitor coupled between the first power source and the first node.

\* \* \* \* \*

专利名称(译)	移位寄存器和使用其的有机发光显示装置		
公开(公告)号	<a href="#">US8284150</a>	公开(公告)日	2012-10-09
申请号	US12/568521	申请日	2009-09-28
[标]申请(专利权)人(译)	三星显示有限公司		
申请(专利权)人(译)	三星移动显示器有限公司.		
当前申请(专利权)人(译)	三星DISPLAY CO., LTD.		
[标]发明人	HAN SAM IL		
发明人	HAN, SAM-IL		
IPC分类号	G09G3/36		
CPC分类号	G11C19/184 G09G3/3266		
优先权	1020090002232 2009-01-12 KR		
其他公开文献	US20100177023A1		
外部链接	<a href="#">Espacenet</a> <a href="#">USPTO</a>		

摘要(译)

公开了一种移位寄存器。在一个方面，移位寄存器具有多个级，这些级依赖地耦合到起始脉冲的输入线，并且由分别输入到第一，第二和第三输入线的第一，第二和第三时钟信号驱动。移位寄存器包括第一和第二稳压器电路，以防止漏电流。

